

MD	Baltimore Gas and Electric		6.690¢	7.225¢
MD	Delmarva Power & Light		7.490¢	7.720¢
MD	PEPCO		7.390¢	8.350¢
MD	Potomac Edison/ Allegany Power		6.190¢	6.858¢
NY	National Grid (Formerly Niagara Mohawk Power Corporation)	A, C, D, E, F	5.290¢	12.388¢
NY	Orange and Rockland	G	6.430¢	7.363¢

### Today's Hot Matrix Rates Compared to Yesterday

#### Electricity

State	Utility	Rate Class	Today (per kWh)	Yesterday (per kWh)	Difference (Mils)
OH	AEP Energy (Columbus Southern)	SL	3.396¢	3.633¢	2.37
OH	Dayton Power & Light	762	4.215¢	4.442¢	2.27
OH	Dayton Power & Light	797	3.496¢	3.711¢	2.15
OH	Dayton Power & Light	836	3.496¢	3.711¢	2.15
OH	Dayton Power & Light	838	3.496¢	3.711¢	2.15
OH	Dayton Power & Light	97	3.496¢	3.711¢	2.15
OH	Duke Energy	SL	3.255¢	3.518¢	2.63
OH	Duke Energy	TS	3.526¢	3.777¢	2.51
OH	OHIO EDISON	GT	3.634¢	4.079¢	4.45
OH	OHIO EDISON	SL	3.445¢	3.913¢	4.68
OH	Toledo Edison	GT	3.599¢	4.104¢	5.05

### Markets Where Customers Received Competitive Bids!

#### Electricity

Texas: **Oncor Electric Delivery Co., LL:**  
 Bid: 4.515¢ / kWh  
 Best Matrix Rate: 4.769¢ / kWh  
 Difference: 2.54 Mils



### Market Update for Mar 01, 2021

[SEE FULL REPORT](#)

### Commercial Matrix Rates Lower than Utility Rates

#### Electricity

State	Utility	Zone	Rate Class	Best Matrix Rate	Utility PTC
CT	Eversource (Connecticut Light Power)		35 / 37	6.932¢	8.192¢
CT	Eversource (Connecticut Light Power)		30	7.110¢	8.192¢
CT	United Illuminating		GST	5.069¢	11.110¢
CT	United Illuminating		LPT	6.600¢	11.540¢
CT	United Illuminating		GS	6.577¢	8.016¢
DC	PEPCO		GSLV ND	6.256¢	6.900¢
IL	COMED		0-100	5.249¢	7.069¢
MA	Eversource (Formerly Boston Edison - NSTAR)	SEMA	C1	6.293¢	10.790¢
MA	Eversource (Formerly Boston Edison - NSTAR)	SEMA	C2	6.296¢	10.790¢

NY	Central Hudson	G	E201	5.470¢	5.815¢
NY	Orange and Rockland	G	SC2	5.260¢	6.132¢
NY	RG&E	B	SC2	4.520¢	4.623¢
PA	PECO		GS	5.199¢	6.539¢
PA	PPL		GS1	5.846¢	6.662¢

#### Natural Gas

State	Utility	Zone	Best Matrix Rate	Utility PTC
MA	Eversource (Formerly Boston Edison - NSTAR)		57.100¢	69.460¢
MD	Baltimore Gas and Electric		35.100¢	41.910¢
MD	Washington Gas & Light		41.740¢	42.680¢
NY	National Grid Long Island (Formerly Keyspan)		39.850¢	44.105¢
OH	Dominion East Ohio		27.170¢	30.460¢
PA	Columbia Gas		29.094¢	30.949¢
PA	Peoples Natural Gas		25.682¢	26.533¢

### Residential Matrix Rates Lower than Utility Rates


#### Electricity

State	Utility	Zone	Best Matrix Rate	Utility PTC
CT	Eversource (Connecticut Light Power)		7.690¢	8.192¢
CT	United Illuminating		7.890¢	9.369¢
MA	Eversource (Formerly Boston Edison - NSTAR)	NEMA, SEMA	10.990¢	13.000¢
MA	Eversource (Formerly Cambridge - NSTAR)	NEMA, SEMA	10.990¢	11.680¢
MA	Eversource (Formerly Commonwealth - NSTAR)	NEMA, SEMA	10.990¢	11.680¢
MA	Eversource (Western Massachusetts Electric Company)	WCMA	9.990¢	10.550¢
MD	Baltimore Gas and Electric		6.690¢	7.225¢

# Daily Market Updates



# Peak Grid Day Alert



**TODAY!**  
**PEAK ELECTRIC GRID ALERT**  
Tuesday, September 1  
3:30pm - 5:30pm CST

A graphic of a white electric transmission tower on a dark blue background, with power lines extending from it.

**3-5 pm CST**

Tuesday, September 1

Lower your electricity usage on **Tuesday**

**UP TO 30%**

Annual Savings

Lowering your electricity usage on Tuesday could reduce your annual utility bills.

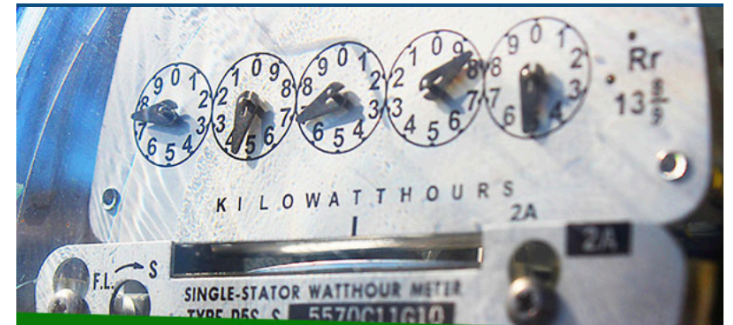
**5**

Peak Grid Days

We've predicted 5 opportunities to save this season. We'll continue to alert

# Renewal Notice

Your Electricity contract is expiring soon.



Your Electricity contract is up for renewal

Your Electricity contract is coming up for renewal in 30 days (03/01/2021).

